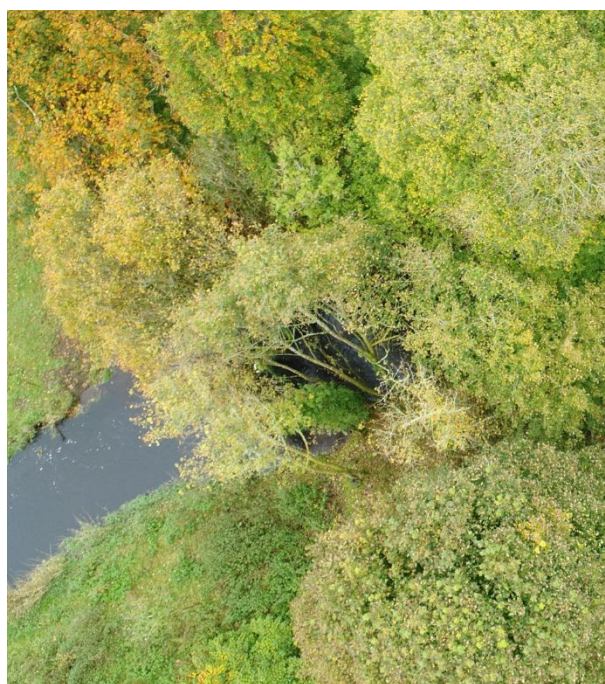


GREEN BELT TREE PLANTING DAYS

HOW

Green Belt plants more trees in Ireland than anyone else. We establish forests and woodlands for private landowners all across Ireland.

In 2022, we will see the planting of native trees across our program exceed 50%. Green Belt would like to invite you to become part of this tree planting to learn and understand why, how and where trees are planted.



WE PLANT TREES



WHERE

Working with our network of professional foresters operating nationwide, we will identify a new planting site that meets your needs – distance from your location, access and accessibility.

We will provide a location map and details on how to get to the site and meet you there. You will get the chance to work with local planting contractors and to see what's involved in actually getting the right tree in the right ground in the right way.



GREEN BELT TREE PLANTING DAYS

WHY

Ireland's forestry industry needs as much support as possible. Rising costs, lower planting numbers and a lack of education around the values of forest and woodland planting.

On your 3 hour visit to the lands, you will gain an invaluable insight into the mechanics of the process to get a woodland established. You will learn about the private forestry industry, the uses of timber, the Carbon capturing potential of the site you are on and, most importantly, spend time in the outdoors having FUN.

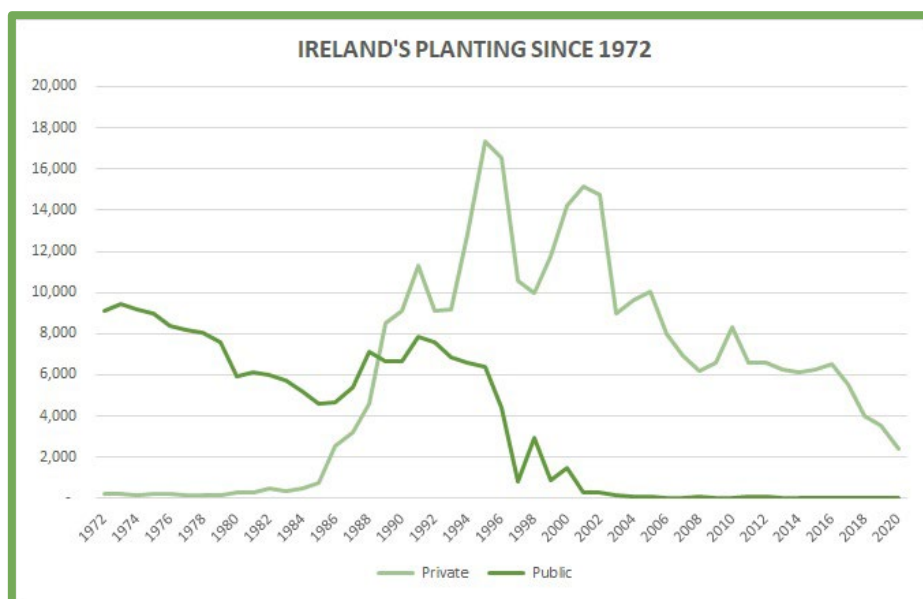
WHAT

On the day, you and your team will get an induction on site from the planters and our local forester. You will learn what tree species will be planted and be given instructions on the best way to use your spade (not just as straightforward as you might think). We will explain how we have taken all natural elements into consideration, such as water courses and local fauna.



At the end of the day, you will each receive

- a personalised tree planting certificate with the details of the forest and its location recorded on it.
- An organic Cotton Green Belt T-Shirt and
- An enormous sense of well being and hopefully encouragement to spread the word about tree planting.



This shows the planting figures across Ireland since 1972. Note the significant drop in private planting since 2010

COSTS: Group size is minimum 10 people, the cost is €90 per person, which includes your t-shirt.