



GREEN BELT

YOUR FOREST • YOUR FUTURE

NATURE BASED EXPERIENCES

Maurice Ryan
maurice@greenbelt.ie



An aerial photograph of a calm lake nestled within a vast forest. The trees around the lake show early autumn colors, with some yellow and orange leaves visible among the green. The lake's surface is still, reflecting the overcast sky. In the distance, rolling hills are visible under a layer of soft, grey clouds.

GUIDED, EXPERT LED NATURE EXPERIENCES ON REAL
BIODIVERSITY ENHANCEMENT SITES,
UNDER GREEN BELT MANAGEMENT.



GREEN BELT
YOUR FOREST YOUR FUTURE

A WORD OF SUPPORT FROM THE ESTATE OWNERS

Our commitment to the long term sustainability of Killegar estate is absolute. For generations, we have been stewards over these lands and are deeply committed to ensuring they remain a valuable resource, both locally and nationally.

The estate offers so much potential, and we really enjoy showing the beauty and heritage of this picturesque location to people who share our passions - nature, history and community.

This estate will be maintained for many, many future generations of Kilbrackens.



Begin a partnership with Nature with A Guided Nature Experience

OUR GUIDED NATURE EXPERIENCES ARE BUILT AROUND UNDERSTANDING LIVING ECOSYSTEMS.

FOR ORGANISATIONS SEEKING CLARITY ON THEIR ROLE WITHIN NATURE,
THIS IS THE STARTING POINT.





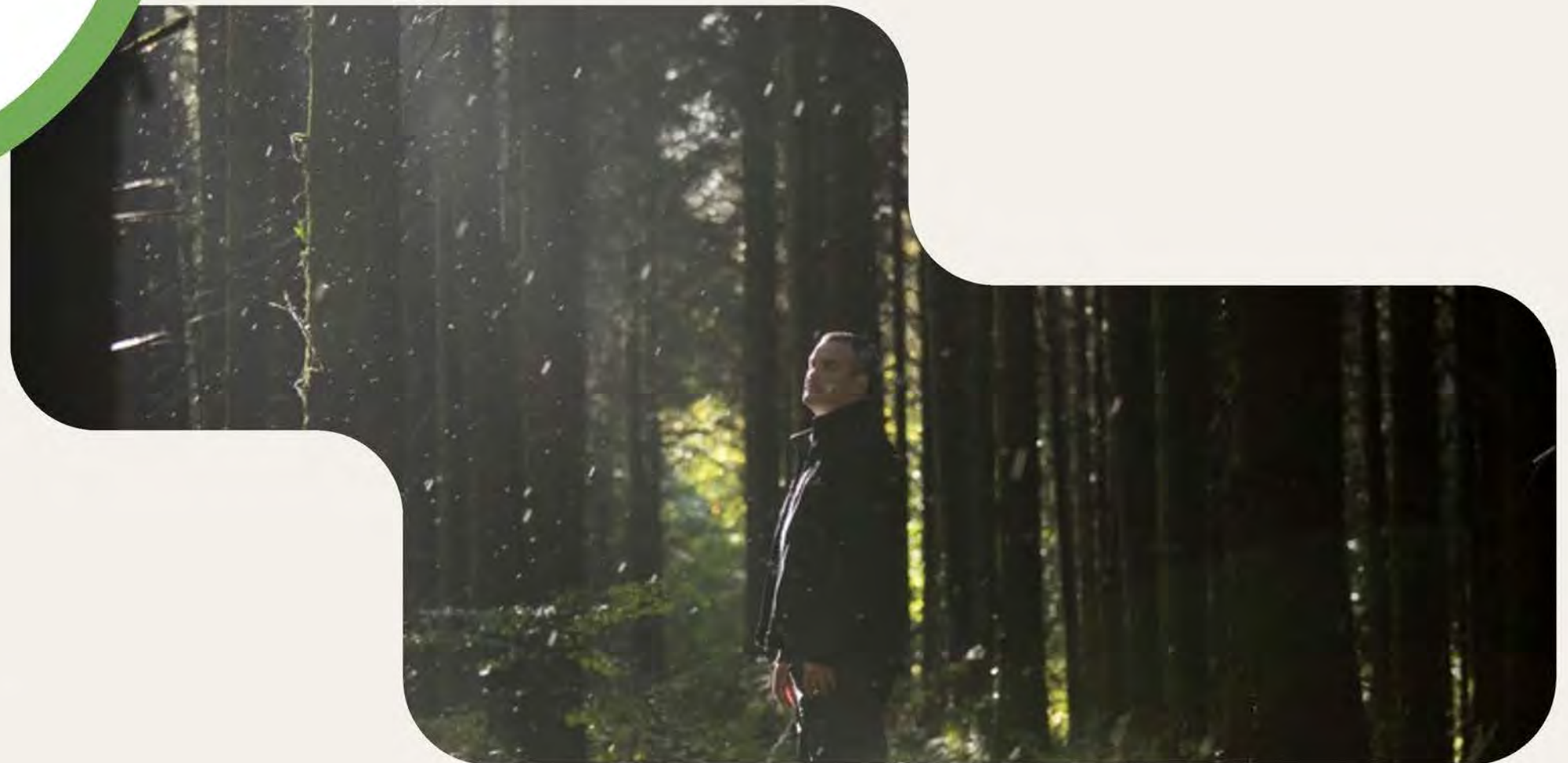
1. **Expert-led walk & discussion**
2. **Exposure to real restoration decisions**
3. **Understanding biodiversity, water & carbon as systems**
4. **Tree planting & maintenance**

Nature you can step into

YOUR TEAM SPENDS TIME INSIDE WORKING LANDSCAPES — NATIVE WOODLAND, RESTORED CATCHMENTS AND BIODIVERSITY PROJECTS — GUIDED BY THE PEOPLE WHO MANAGE THEM EVERY DAY.

Depth, not optics

EXPERIENCES ARE GROUNDED IN REAL OUTCOMES: BIODIVERSITY UPLIFT, WATER PROTECTION AND LONG-TERM LAND STEWARDSHIP.
GREEN BELT WORKS AT SCALE ACROSS IRELAND, DELIVERING NATURE-BASED SOLUTIONS ON HUNDREDS OF HECTARES.



A relationship with place

FROM A SINGLE IMMERSION TO AN
ONGOING PARTNERSHIP, BUSINESSES
CAN RETURN TO THE SAME SITE AND
SEE HOW NATURE RESPONDS OVER
TIME — SEASON BY SEASON, YEAR BY
YEAR.



Here's what stewardship looks like over time.



A photograph of a narrow, paved path winding through a dense forest. The trees are tall and thin, with their leaves in various shades of green and yellow, indicating autumn. The path is covered with fallen leaves, and the overall atmosphere is serene and natural.

ADVANCED LEVEL PARTNERSHIP

For organisations who commit to a longer term
stewardship of a living landscape.



SOME CHOOSE A GUIDED IMMERSION INTO NATURE.

OTHERS, CHOOSE TO GO FURTHER - MAKING A COMMITMENT TO THE LONG TERM PROTECTION, RESTORATION AND MEASUREMENT OF A LIVING LANDSCAPE AND ITS ECOSYSTEMS.

[WATCH THE VIDEO OF THE ESTATE](#)

An aerial photograph of a large estate. In the center, a large, multi-story stone house with a grey roof is visible, surrounded by a dense forest of trees with green and yellow foliage. The forest extends to the horizon under a cloudy sky. The text is overlaid on the upper half of the image.

The Biodiversity Net Gain improvements identified, require an investment of **€150,000 which is spread over a 5 year period.**

We invite companies to make this long term commitment of **€30,000 a year, for 5 years**, to support these works to restore and upgrade the land, trees and water on Killegar estate.

The impact of this investment will lead to both ***Additionality & Permanence*** in Biodiversity Net Gain for the woodlands, water and habitat. These will persist, under agreement, in nature for **more than 100 years.**

- BIODIVERSITY BASELINE IS ESTABLISHED.
- ECOLOGICAL SURVEYS ARE CARRIED OUT
- eDNA SURVEYS ON WATER COURSES COMPLETED.
- DETAILED FORESTRY INVENTORY.
- FULL LIDAR SURVEYS

YEAR 1

- MANAGE AND PROTECT WETLAND AREAS
- CREATE DEDICATED WALKING PATHS WITH INTERACTIVE INFORMATION SIGNAGE
- ANNUAL REPORT ISSUED

YEAR 3

- REMOVE INVASIVE SPECIES UNDER DAFM GUIDELINES
- REPLANT IMPACTED WOODLANDS WITH NATIVE SPECIES.
- DEVELOP A NATIVE SEED NURSERY ON SITE
- ISSUE ANNUAL REPORT

YEAR 2

- TARGET BIODIVERSITY CREDITS
- HOST CORPORATE DAYS (MINIMUM OF 3)
- MEASURE, REPORT AND VERIFY UPLIFTS AND RECORD THESE ON A DYNAMIC WEBSITE

YEAR 4

- UPDATE DETAILED ECOLOGY AND FORESTRY SURVEYS TO MEASURE NATURE GAIN VERSUS BASELINE
- ISSUE UPDATED BIODIVERSITY NET GAIN REPORT.

YEAR 5

WHAT BENEFIT'S CAN YOU EXPECT



THE LANDOWNER

ESSENTIAL LANDSCAPE OPERATIONS CARRIED OUT THAT WOULD OTHERWISE BE TOO EXPENSIVE

LONG TERM PROTECTION OF A VALUABLE NATIONAL ASSET

ABILITY TO IMPROVE THE NATURAL CAPITAL OF THE ESTATE

PROMOTE BIODIVERSITY AMONG THEIR PEERS AND ENCOURAGE ADDITIONALITY ON A NATIONAL BASIS

ESTABLISH POTENTIAL REVENUE STREAMS TO PROTECT AND IMPROVE THE ESTATE INTO THE FUTURE

POTENTIAL TO GATHER SEEDS FROM HISTORIC TREES TO PROTECT THE FUTURE GENERATIONS OF THOSE SPECIES

THE SUPPORTING BUSINESS

VERIFIED AND QUANTIFIABLE NATURE BASED IMPACTS REFLECTED ON A DEDICATED WEBSITE AND WRITTEN REPORTS.

A DEDICATED SET OF INFORMATION SIGNAGE FEATURING YOUR LOG, ACROSS THE ESTATE.

LOWER COST FINANCE UNDER EU TAXONOMY GUIDELINES

PREPARE FOR COMPLIANCE REPORTING WITH VERIFIED NATURE BASED DATA

BECOME A NATIONAL LEADER IN SUSTAINABILITY

IMPROVE STAFF AND CLIENT RETENTION THROUGH YOUR ACTIONS & EXPERIENCE DAYS - 3 GUARANTEED ANNUAL VISITS

MEET TENDER QUALIFYING REQUESTS FOR SUSTAINABILITY INITIATIVES

Double Materiality Impacts

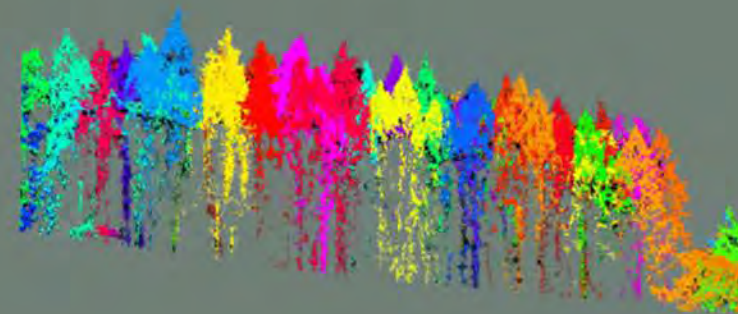
THIS PROJECT DELIVERS POSITIVE AND IMPORTANT RESTORATIVE IMPACT....BUT HOW DOES IT RELATE TO YOUR BUSINESS?



- EMPLOYEE WELL BEING - ENGAGE YOUR STAFF WITH AN INDIGENOUS PROGRAM
- COMMUNITY ENGAGEMENT - SUPPORTING LOCAL AMENITY WALKS AND RESOURCES
- ETHICAL BUSINESS PRACTICES - BE AWARE OF THE POSITIVE IMPACT YOU CAN MAKE



- INDUSTRY LEADERSHIP - SHOWCASE YOUR COMMITMENT TO NATURE BASED SOLUTIONS
- ACCOUNTABILITY & COMMUNICATION - DISPLAY YOUR NET ZERO INITIATIVES



- INNOVATION - LEVERAGE TECHNOLOGY TO REPORT BIODIVERSITY UPLIFTS
- CLIMATE ACTION - CARBON STORAGE AND BIODIVERSITY UPLIFTS
- CIRCULAR ECONOMY - IMPROVE WATER & AIR QUALITY CRUCIAL TO YOUR BUSINESS

TREES ON THE ESTATE

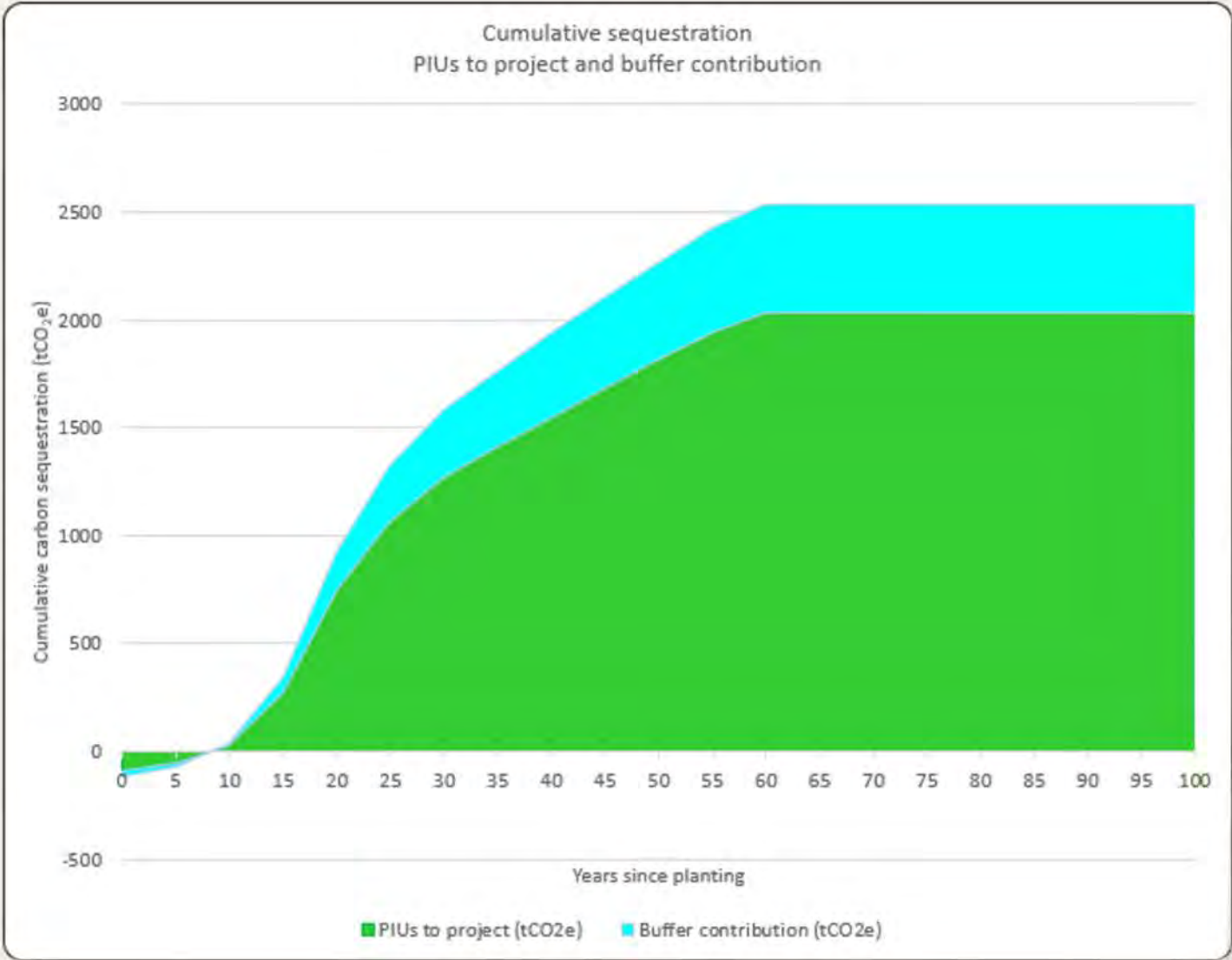
KILLEGAR ESTATE HOSTS AN ARRAY OF NATIVE SPECIES OF VARIOUS AGES. NURTURING THESE QUALITY PLANTS AND PROTECTING THEIR LONG TERM HEALTH INTO MATURITY IS OUR PRIMARY FOCUS.

ADDITIONALLY, WE WILL TARGET SEED COLLECTION AND PROMOTE NATURAL REGENERATION AROUND THE ESTATE, SYMPATHETIC WITH THE HISTORY OF THE ESTATE AND ITS LONGER TERM MANAGEMENT.

PROPAGATING A LOCAL SEED SOURCE TO REPLACE INVASIVE SPECIES, REPOPULATE DAMAGED AREAS AND SUPPORT THE PERMANENT TREE COVER ON APPROPRIATE AREAS OF THE ESTATE.



CARBON SEQUESTRATION



ESTIMATED ANNUAL AVERAGE OF 3 tCO₂e

USING THE UK'S WOODLAND CARBON CODE (WCC) WE HAVE CALCULATED THE LIFETIME CARBON SEQUESTRATION RATES OF PLANTING 4 HECTARES OF OAK.

THIS IS AN APPROXIMATE AREA OF WOODLAND ESTABLISHMENT TO REPLACE THE INVASIVE SPECIES CLEARED UNDER OUR RESTORATION PLAN.

USING THE GUIDELINES OF OPEN SOURCE IMPROVED FOREST MANAGEMENT METHODOLOGIES, WE WILL ASSESS THE CUMULATIVE, ANNUAL SEQUESTRATION FROM THE EXISTING WOODLANDS.

THROUGH YOUR SUPPORT OF THIS LONG TERM PROJECT, AND AVOIDING HARVESTING OF TIMBER RESOURCES, BEYOND NATURAL SELECTION, WE WILL CONTINUE TO SEQUESTER SIGNIFICANT VOLUMES OF CO₂e.

WATER QUALITY

THE EU WATER FRAMEWORK DIRECTIVE AIMS FOR ALL WATERS TO ACHIEVE AT LEAST GOOD STATUS BY 2027. CURRENT EPA DATA SHOWS THAT ONLY 54% OF IRISH SURFACE WATERS MEET THIS STANDARD.

KILNAMAR LAKE SITS WITHIN THE BOUNDARIES OF THE ESTATE AND IS FURTHER LINKED TO GLASSHOUSE LAKE. MEASURING THE eDNA OF THESE IMPORTANT WATER BODIES AND THEIR INTERCONNECTEDNESS WILL PROVIDE A HEALTH CHECK OF THE SURFACE WATER.

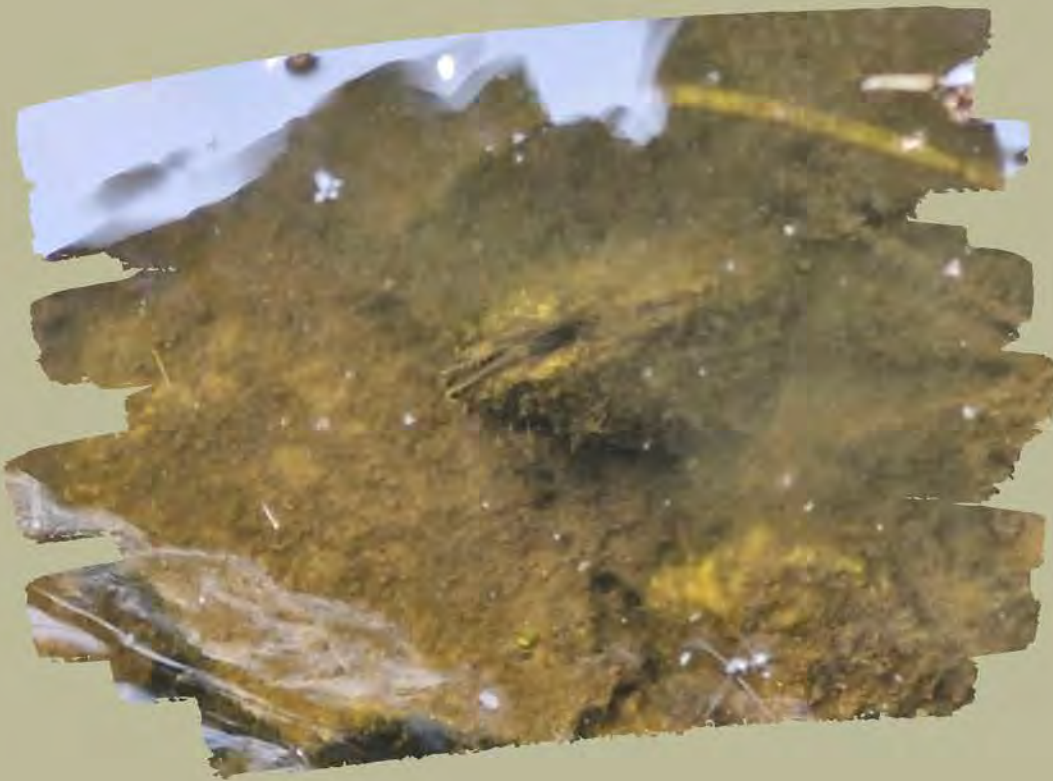
THE STUDY WILL ALSO PROVIDE A DETAILED HISTORY OF THE AQUATIC LIFE FROM THE LAKES AND STREAMS, AND WHAT CAN BE NURTURED WITH ATTENTION THROUGH IMPROVING THE WATER QUALITY.

AS PART OF THE SOLUTION, GREEN BELT WILL INTRODUCE BIOCHAR TO ADSORB NUTRIENT RUN OFF FROM THE ADJACENT SOILS INTO THE WATER, AND FILTER THE STREAMS ENTERING THE MAIN WATER BODIES.



THE VALUABLE IMPACTS of IMPROVING WATER

eDNA IS A VALUABLE TOOL FOR CONSERVATION AND BIODIVERSITY RESEARCH, CONTRIBUTING TO THE UNDERSTANDING AND MANAGEMENT OF ECOSYSTEMS AND THE PROTECTION OF ENDANGERED SPECIES.



WATER QUALITY LEADS TO THE IMPROVEMENT OF AQUATIC HABITATS AND THE REINTRODUCTION OF IMPORTANT SPECIES TO MAINTAIN THAT WATER QUALITY.

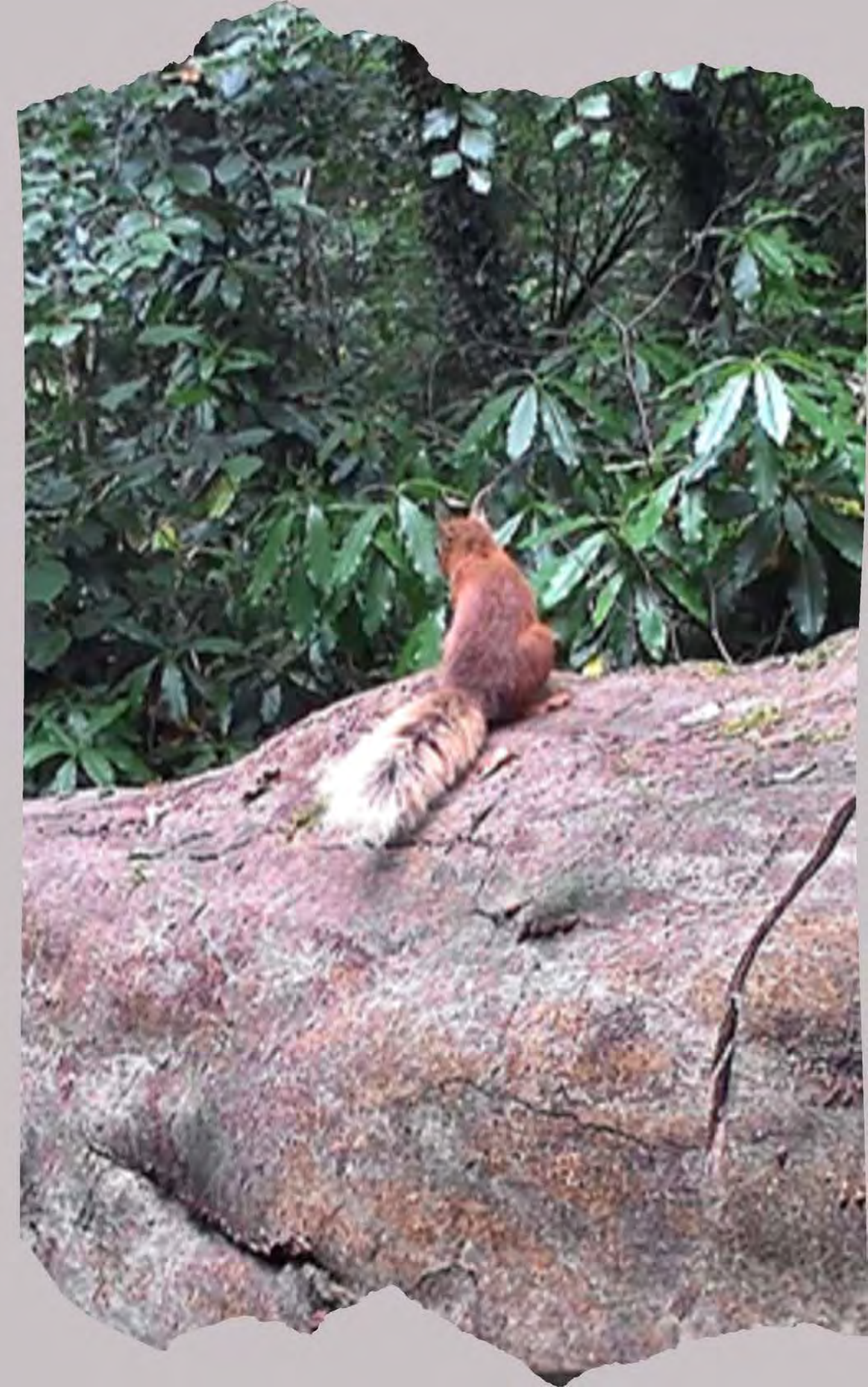
HABITAT

UNDERSTANDING HABITAT AND THE CREATURES THAT EXIST ON THE ESTATE WILL ALLOW US TO ENHANCE AND PROTECT THEM.

BY IDENTIFYING AND RESTORING THE VARIETY OF HABITATS ACROSS THE ESTATE, IT WILL PROVIDE SHELTER, SECURITY AND PRESERVE ECOSYSTEMS.

HABITATS OF MOST IMPORTANCE AND PROMINENCE WITHIN THE ESTATE INCLUDE WOODLAND, BOTH NATURAL AND PLANTED, WETLANDS AND WATERBODIES.

CONTROLLING THE HUMAN INTERVENTION ACROSS THESE AND PROVIDING BIODIVERSITY CORRIDORS, WILL BRING AN AMENITY VALUE TO THE ESTATE, LEADING TO VOLUNTEER RESTORATION AND EDUCATIONAL ACTIVITIES.





INVASIVE SPECIES

RHODODENDRON & LAUREL CAN FORM VERY DENSE THICKETS AND OUT-COMPETE NATIVE PLANTS FOR SPACE AND RESOURCES, ESPECIALLY FOR SUNLIGHT.

OTHER IMPACTS ON FISH AND INVERTEBRATE COMMUNITIES HAVE BEEN RECORDED. RHODODENDRON CAN ALSO PREVENT ACCESS TO SITES BY THE SHEAR MASS OF PLANT MATERIAL BLOCKING PATHS AND RIGHT OF WAY.

GREEN BELT WILL WORK UNDER DAFM GUIDELINES AND CONTROLS TO ASSIST IN THE ERADICATION OF INVASIVE SPECIES.

THESE AREAS WILL THEN BE REPLANTED WITH NATIVE TREE SPECIES THAT ARE OCCURRING ORGANICALLY ON SITE.

THESE CHANGES IN TREE COVER WILL BE TRACKED ANNUALLY.

WETLANDS

WETLANDS AREAS ARE ABUNDANT IN HABITAT AND NATURAL ECOSYSTEMS. THERE ARE SMALL, BUT IMPORTANT AREAS ACROSS KILLEGAR ESTATE THAT WILL BE REHABILITATED TO CREATE A MOSAIC OF LIVING HABITATS ACROSS THE ESTATE.

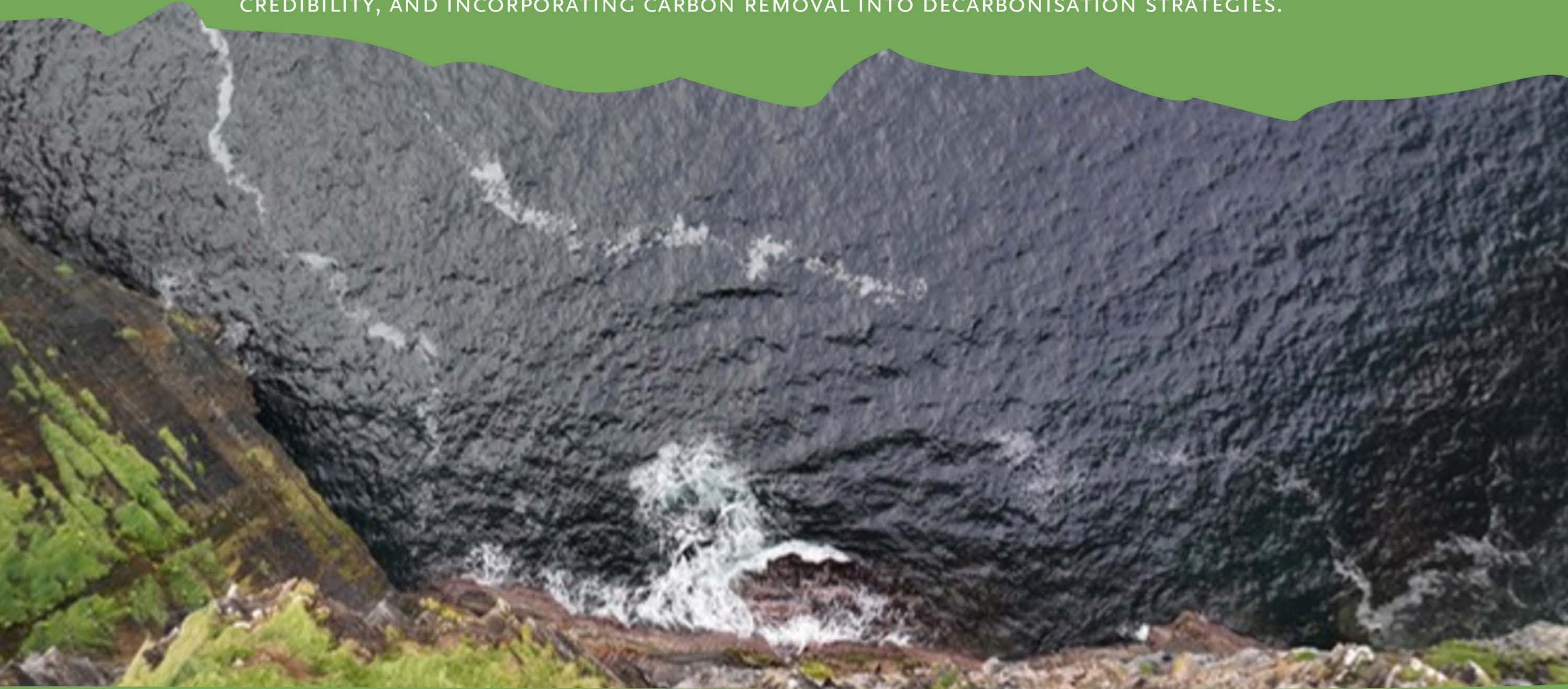
WE ENGAGE WITH PEATLAND FINANCE IRELAND AND UNIVERSITIES TO MONITOR THE OPERATIONS.

PROTECTING THESE HABITATS IS VITAL FOR BIODIVERSITY, WATER FILTRATION, FLOOD MITIGATION, AND CARBON STORAGE, SUPPORTING BOTH WILDLIFE AND HUMAN COMMUNITIES THROUGH RECREATION AND RESOURCES.



Measurement, Reporting & Verification

EFFECTIVE MRV IS CRITICAL FOR UNDERSTANDING GHG SOURCES, DESIGNING MITIGATION STRATEGIES, ENHANCING CREDIBILITY, AND INCORPORATING CARBON REMOVAL INTO DECARBONISATION STRATEGIES.





INTERACT WITH OUR UNIQUE PLATFORM



RECORD ALL YOUR SITE
DATA IN ONE LOCATION

TRACK DATA FROM
WATER, LAND, HABITAT
AND MORE

MONITOR ANNUAL
CHANGES

ALLOW FOR INTERACTIVE
ENGAGEMENT

TRACK & RECORD
ANIMAL MOVEMENTS

What am I looking at?

RECORD ANIMAL MOVEMENTS AND PRESENCE












MONITOR HABITAT AND GROWTH RATES

Actions



Land Cover present in your site



<div>Forest and semi natural areas</div> <div>Forests</div> <div>0.60 FA • 0.80 NS • 1.00 MSA </div>	<div>Forests</div> <div>Broad-leaved forest</div> <div>0.80 FA • 0.80 NS • 1.00 MSA </div>	<div>Inland waters</div> <div>Water bodies</div> <div>0.00 FA • 0.30 NS • 0.00 MSA </div>	<div>Forests</div> <div>Coniferous forest</div> <div>0.30 FA • 0.80 NS • 0.1 MSA </div>
--	--	---	---



ESTABLISHED IN 1982 BY MOSSIE RYAN AND TIM O'BRIEN, GREEN BELT PIONEERED THE PRIVATE FORESTRY INDUSTRY IN IRELAND.

WE HAVE PLANTED MORE THAN 600 MILLION TREES AND OUR PROFESSIONAL FORESTERS CONTINUE TO WORK WITH OUR 10,000 CLIENTS TO PROVIDE EXPERT ADVICE AS THE MARKET EVOLVES.

1082

GREEN BELT
YOUR FOREST . YOUR FUTURE

Irish Forestry Profile

-900,000 hectares of
forestry in Ireland

-European Average cover is
33%

-23,000 private forest
owners

PRIVATE
50%



COILLTE
50%

FORESTRY COVER
11%



89%

COSTINGS

IMMERSIVE EXPERIENCE DAY – €150 per person

INCLUDES - ALL TREE'S, SUPPORT, TRAINING, EDUCATION, GUIDED EXPEDITION.

AT THE END OF THE EVENT, YOUR GROUP WILL BE PRESENTED WITH A BRANDED CERTIFICATE PER ATTENDEE.

THE WORK CARRIED OUT WILL BE RECORDED AND INFORMATION UPLOADED TO THE DEDICATED BIODIVERSITY PLATFORM.

IMAGES AND VIDEO FROM THE DAY, INCLUDING DRONE FOOTAGE AND NATURE DATA, WILL BE SHARED.

NATURE ACTIVITY STEWARDSHIP – €30,000 per year

A DEFINITIVE AND COMMITTED TIMELINE TO CREATING A LASTING LEGACY ON AN IMPORTANT PIECE OF LAND IN IRELAND.

OVER THE YEAR TERM, AN ANNUAL COMMITMENT OF €30,000 WILL BE PAID.

THE BENEFITS TO YOUR BUSINESS ARE:

1. 3 IMMERSION EVENTS ANNUALLY
2. A DETAILED BIODIVERSITY REPORT ANNUALLY
3. CARBON CALCULATIONS
4. DATA AND VERIFIED INFORMATION TO BE USED IN YOUR SUSTAINABILITY REPORTS.
5. EXPOSURE ON OUR SOCIAL MEDIA AND IMAGERY AND FOOTAGE TO BE SHRED FOR YOUR OWN USE.
6. BRANDED SIGNAGE ACROSS THE ESTATE ALONG THE AMENITY TRAILS



A photograph of a dense forest with tall trees and green foliage, viewed from a low angle looking up. The image is framed by two large, overlapping green circular shapes that create a stylized, modern aesthetic.

“ ”

THERE IS...A RISK OF DRASTICALLY
UNDERESTIMATING CLIMATE AND
NATURE RISK WHEN THEY ARE SEEN IN
ISOLATION

EUROPEAN CENTRAL BANK, 2023



GREEN BELT

**Your Forest,
Your Future.**

Maurice Ryan
Green Belt
www.greenbelt.ie